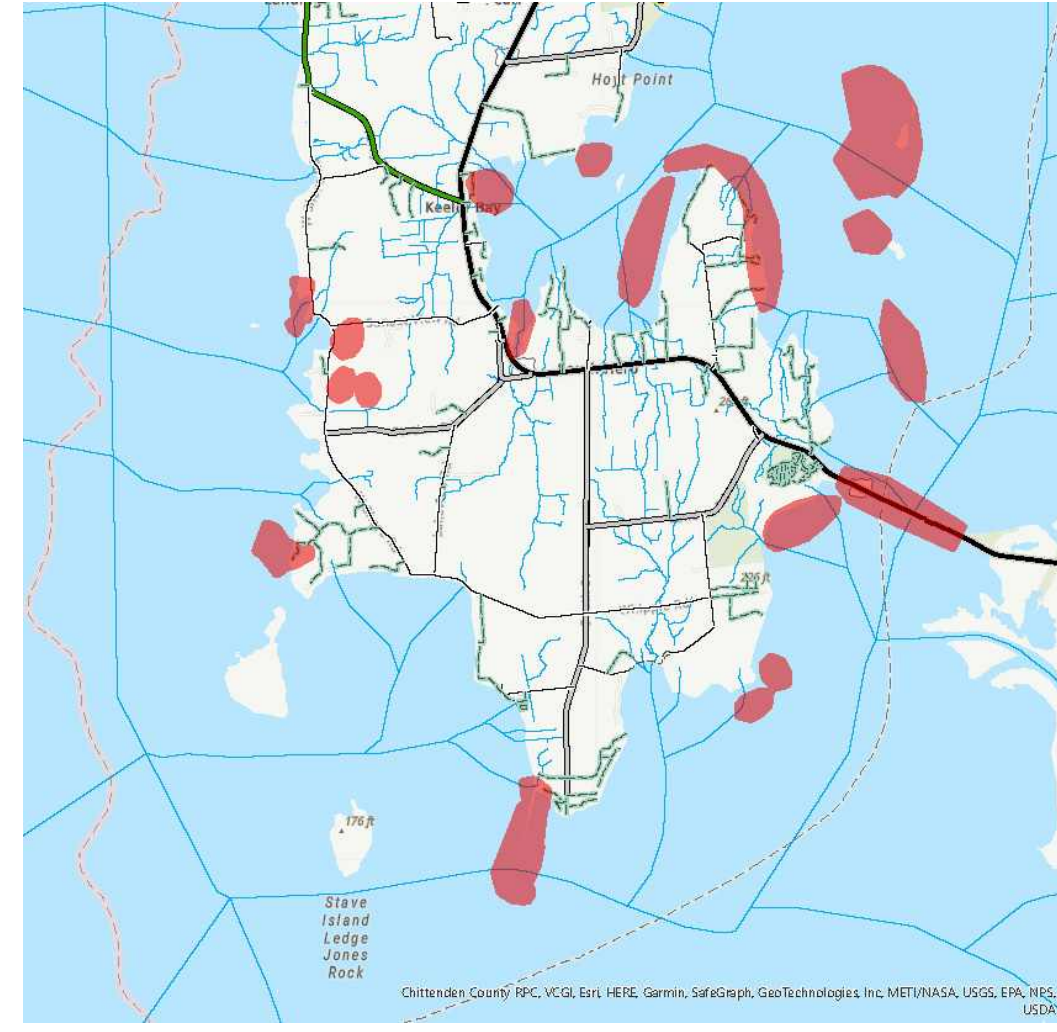
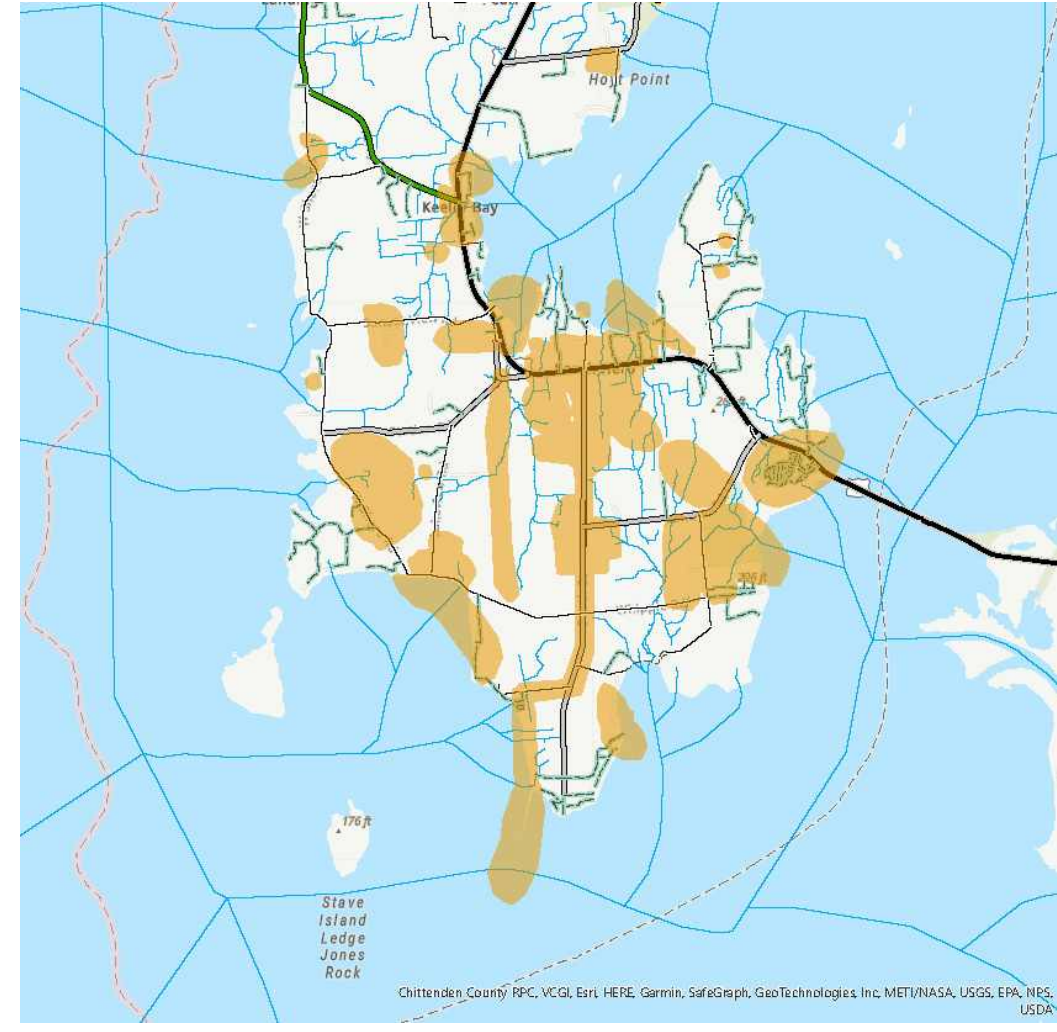


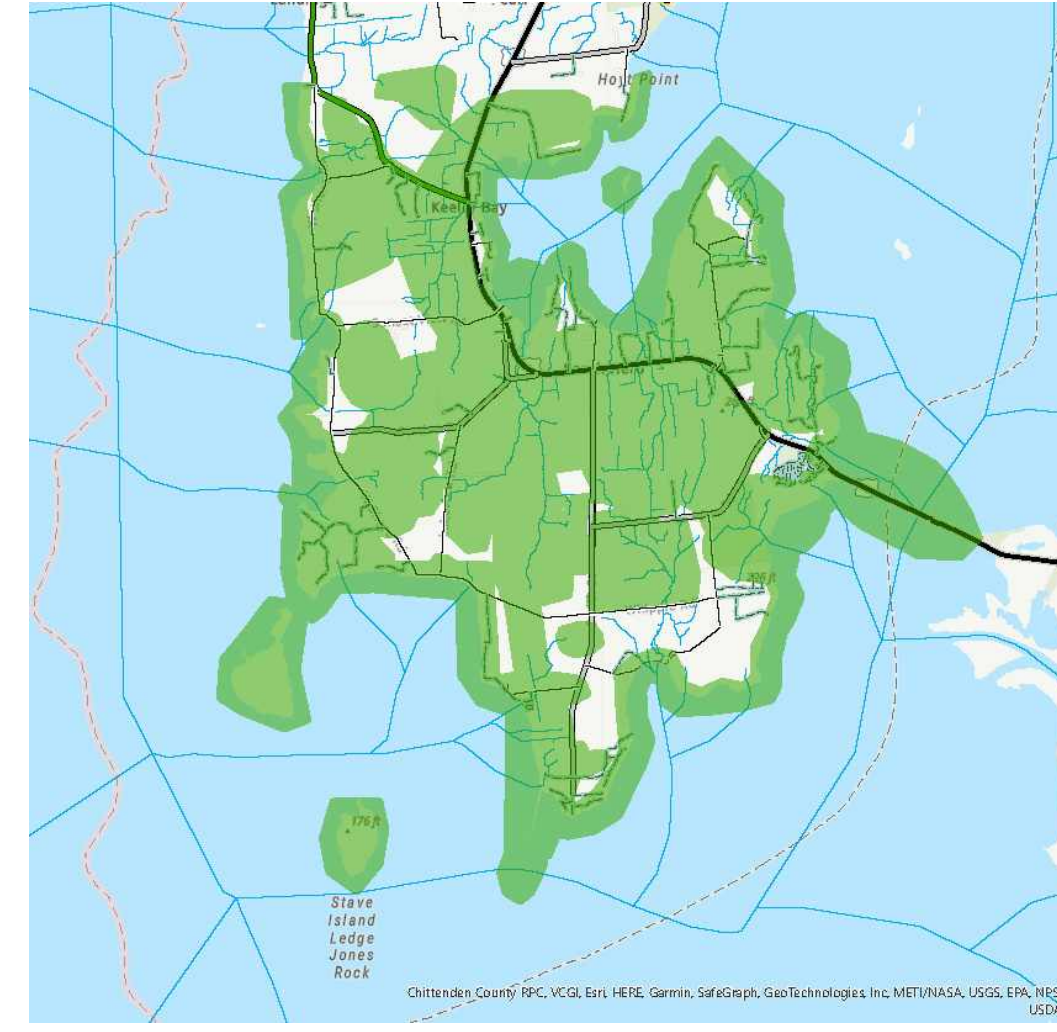
Hunting & Fishing



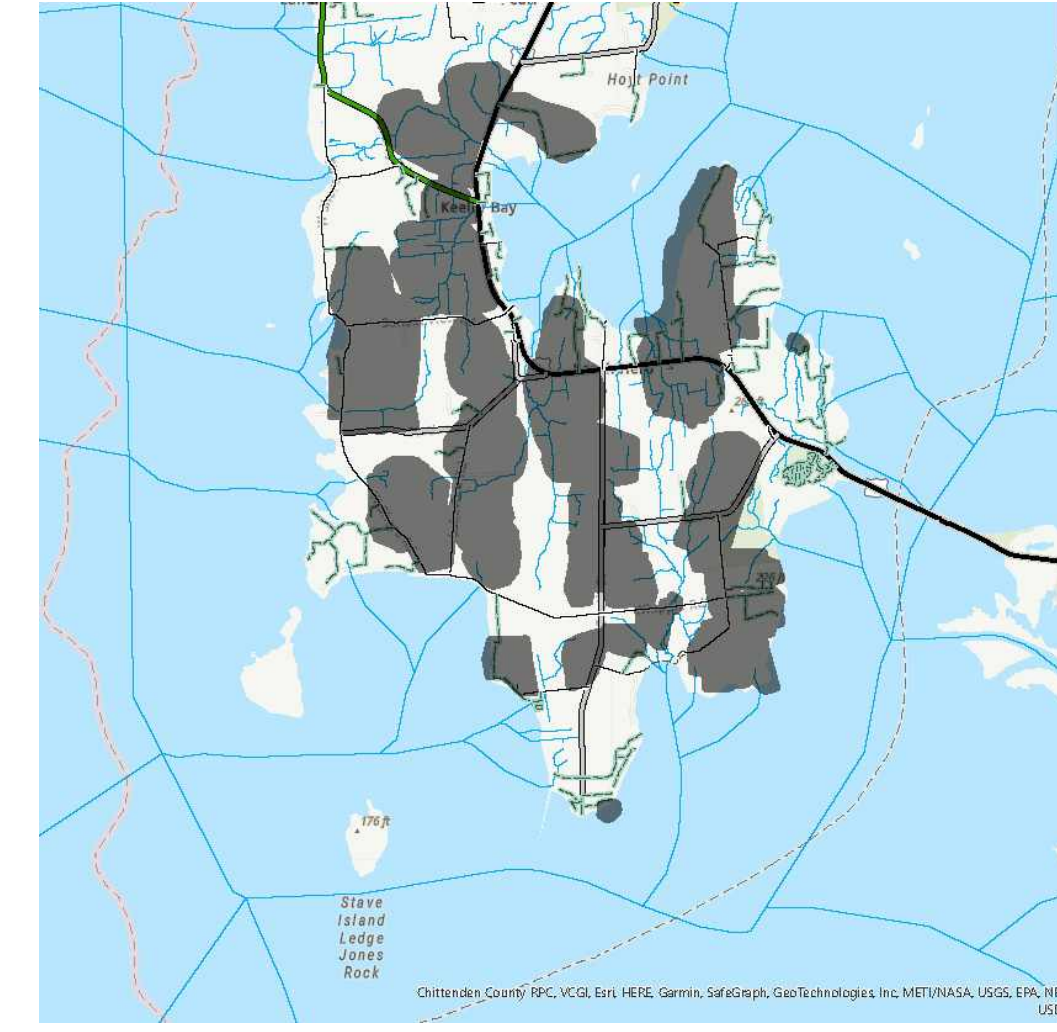
Community



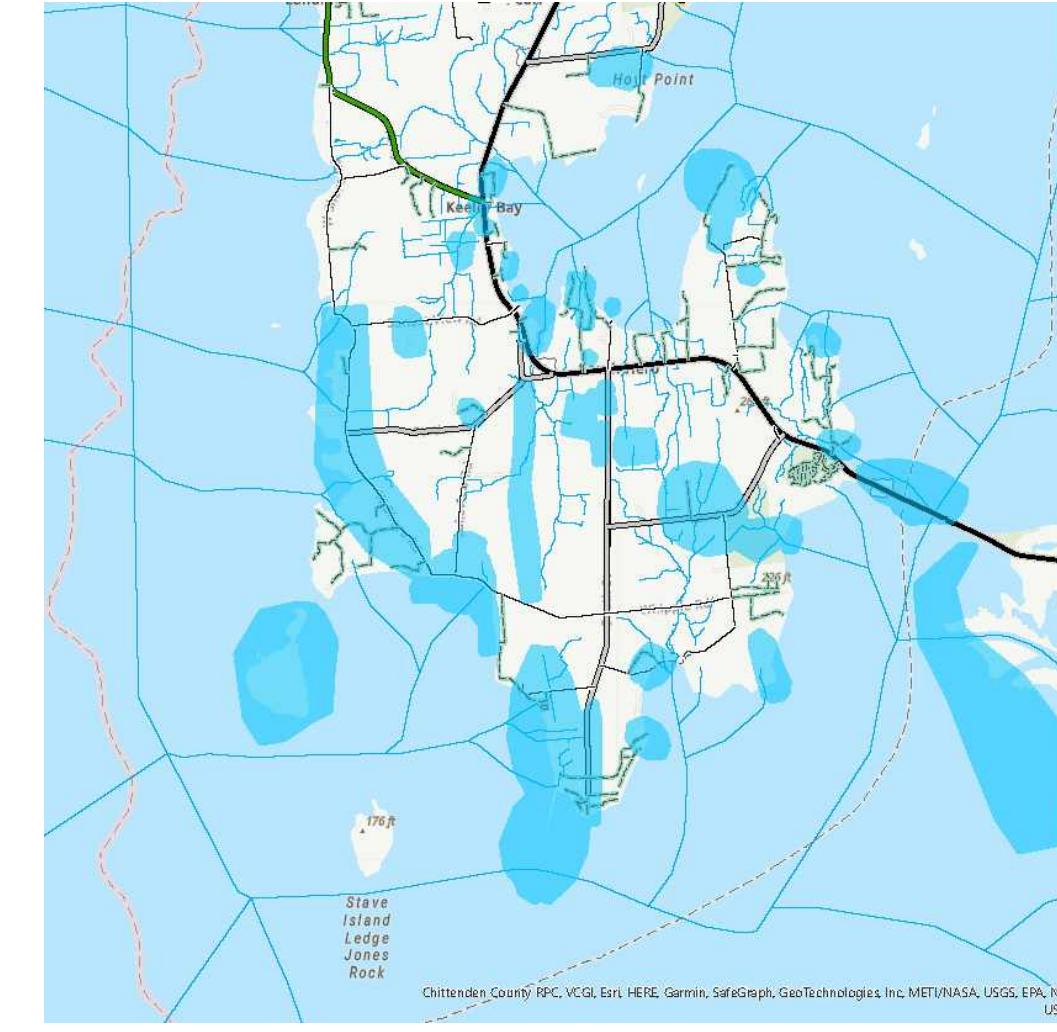
Ecological



Working Landscape

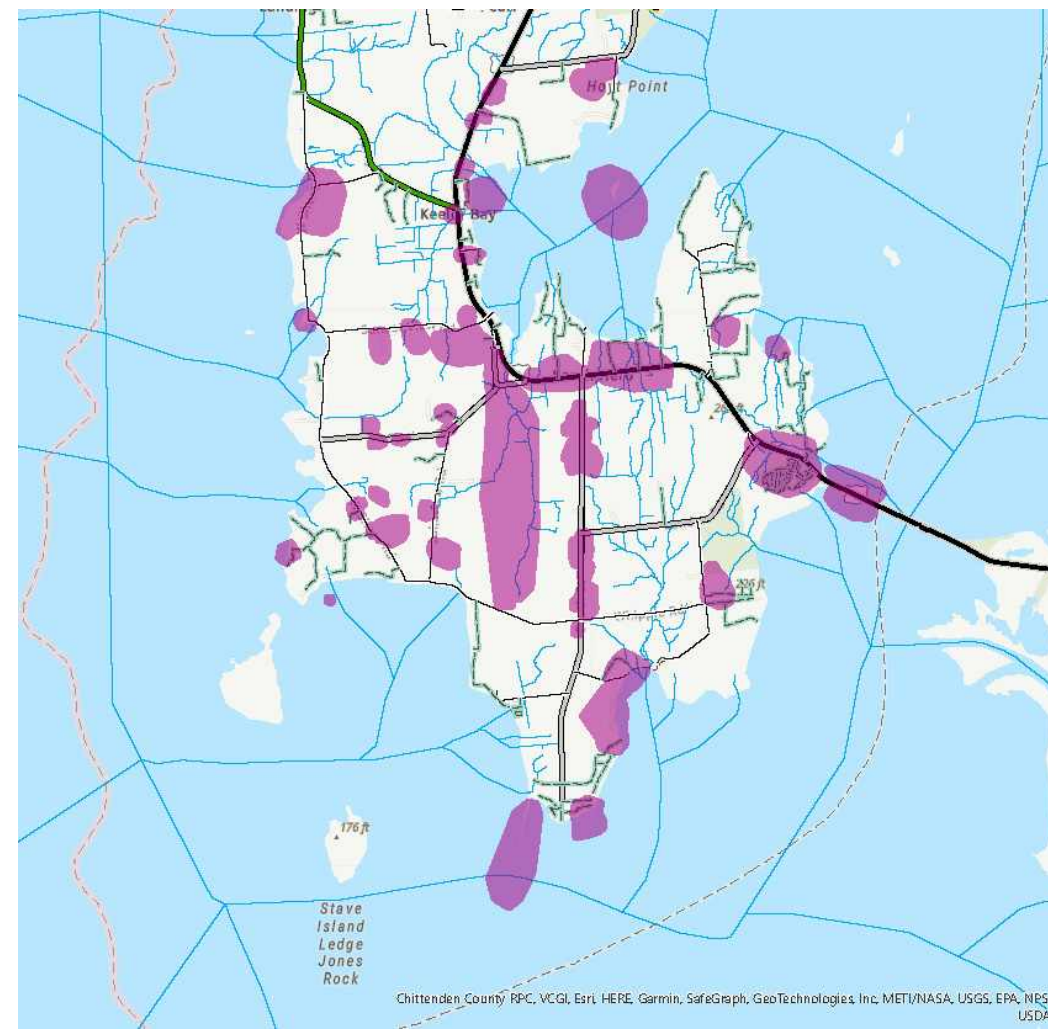


Spiritual

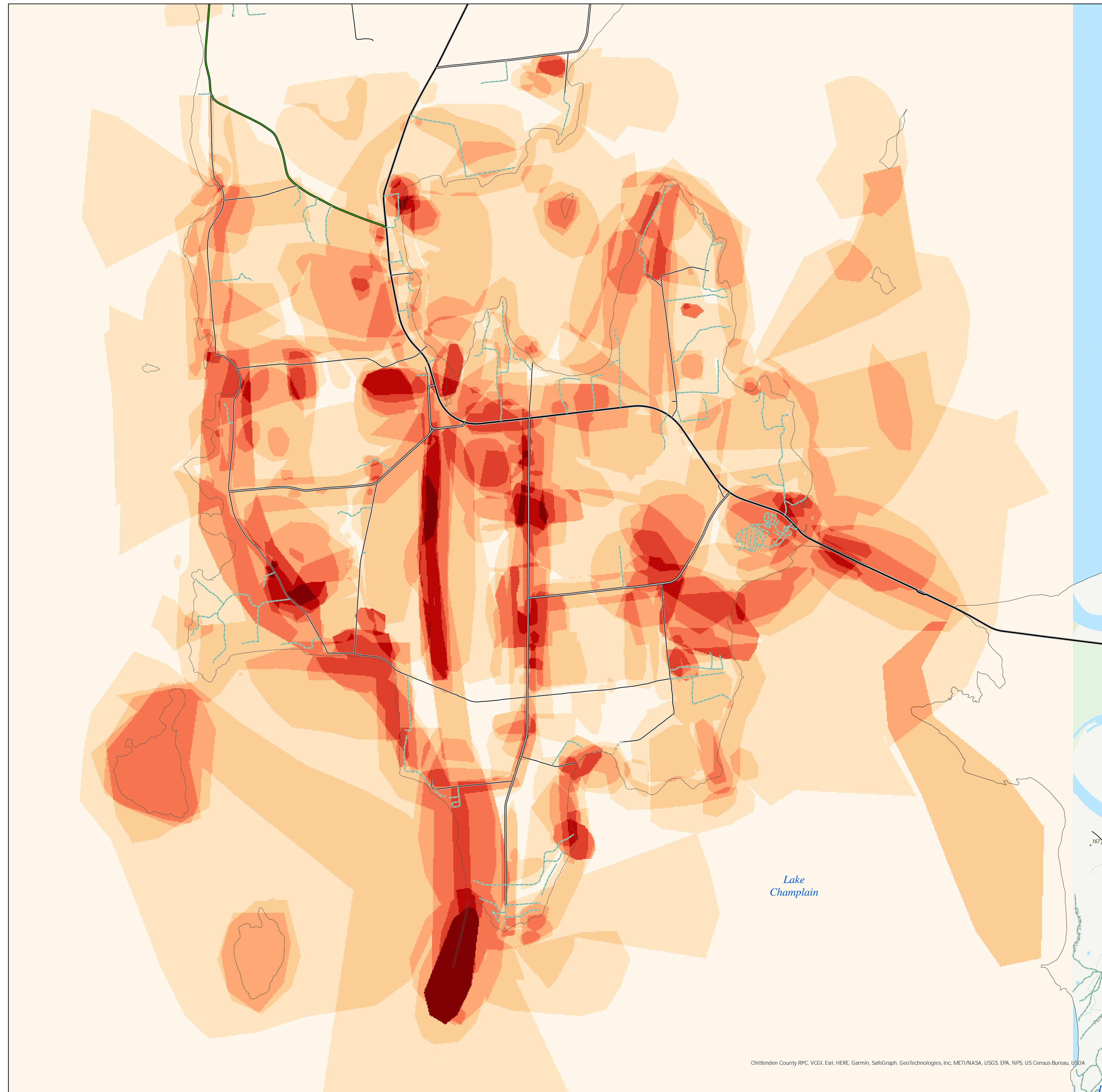


South Hero Community Values Mapping

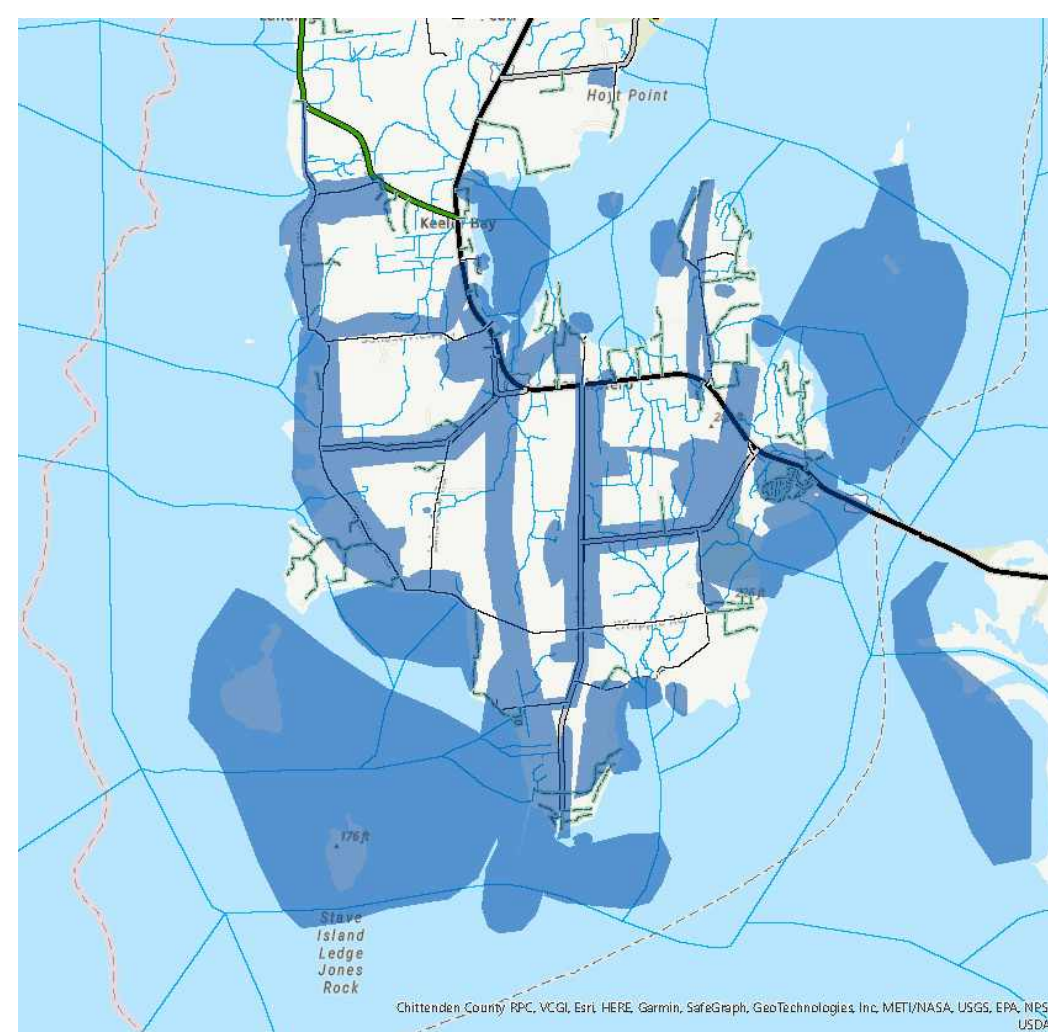
Cultural / Historical



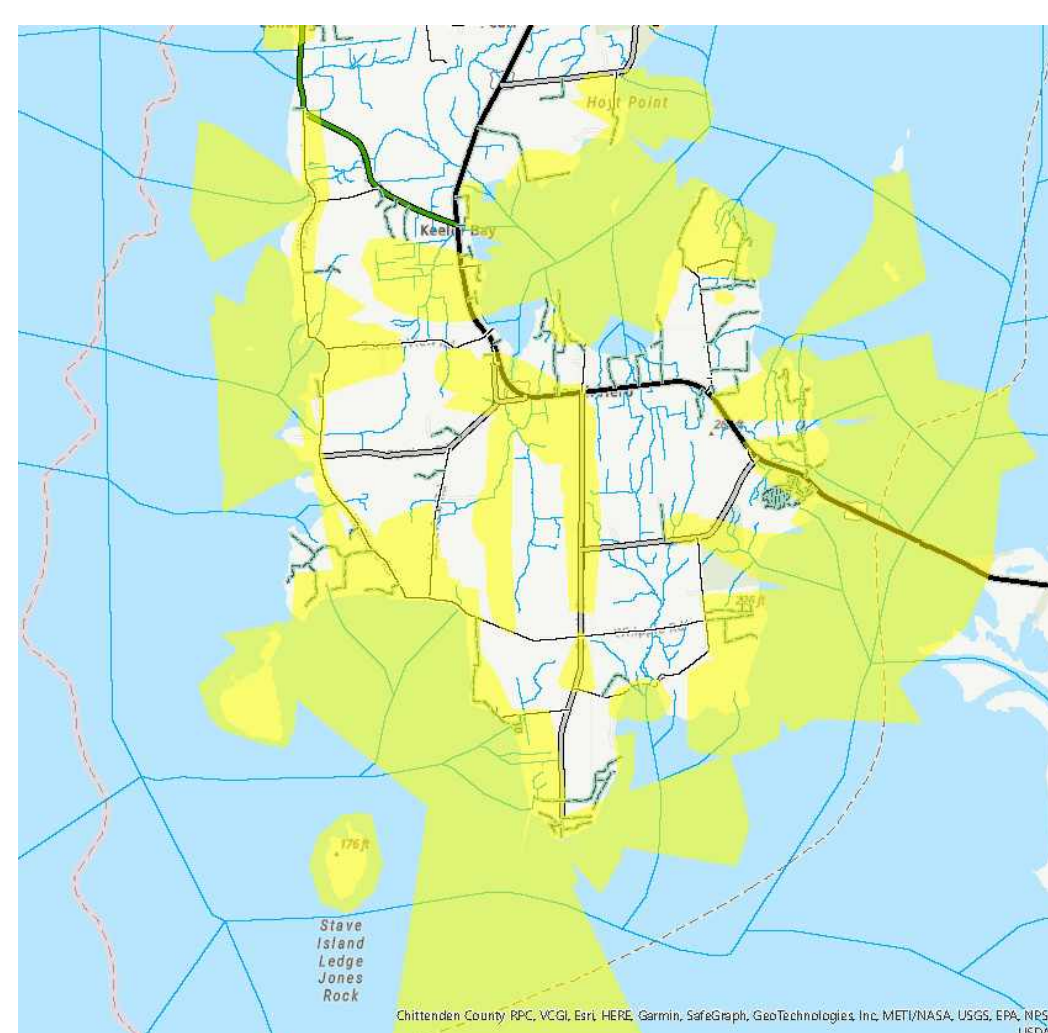
Overlapping Value Groups



Recreation

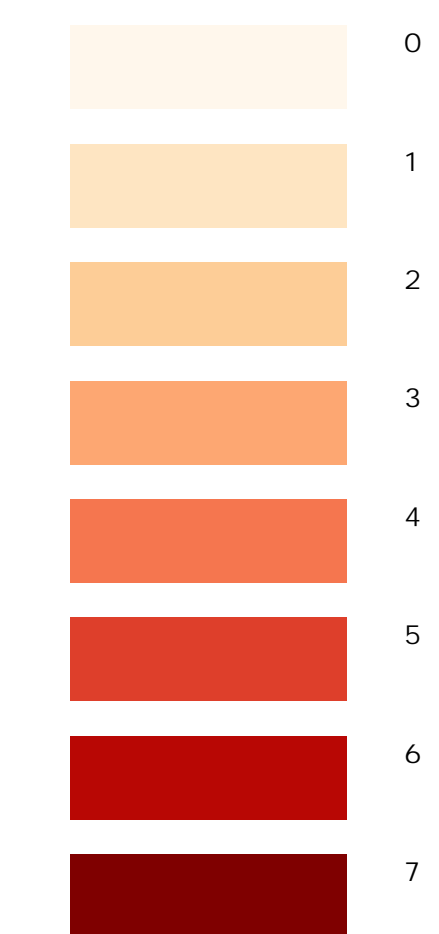


Scenic



In May, 2023, the South Hero Conservation Commission & South Hero Land Trust hosted a community values mapping event online and in-person to engage residents in learning more about the range of values residents care about. The event was facilitated by Vermont Fish & Wildlife Department. This included an in-person values mapping event on 5/2/23 and an online values mapping activity on 5/9/23. Participants were placed in six small groups during the in-person event and two small groups online (Teams 7 & 8). Together these responses were combined into eight value groups including: Scenic, Recreation, Cultural / Historical, Hunting & Fishing, Community, Ecological, Working landscapes, & Spiritual.

Overlapping Value Groups



Data Sources: Vermont Center for Geographic Information, Vermont Fish & Wildlife Department
 Vermont State Plane Projection
 NAD1983 Datum
 M&P by Jens Hilke
 May 2022